



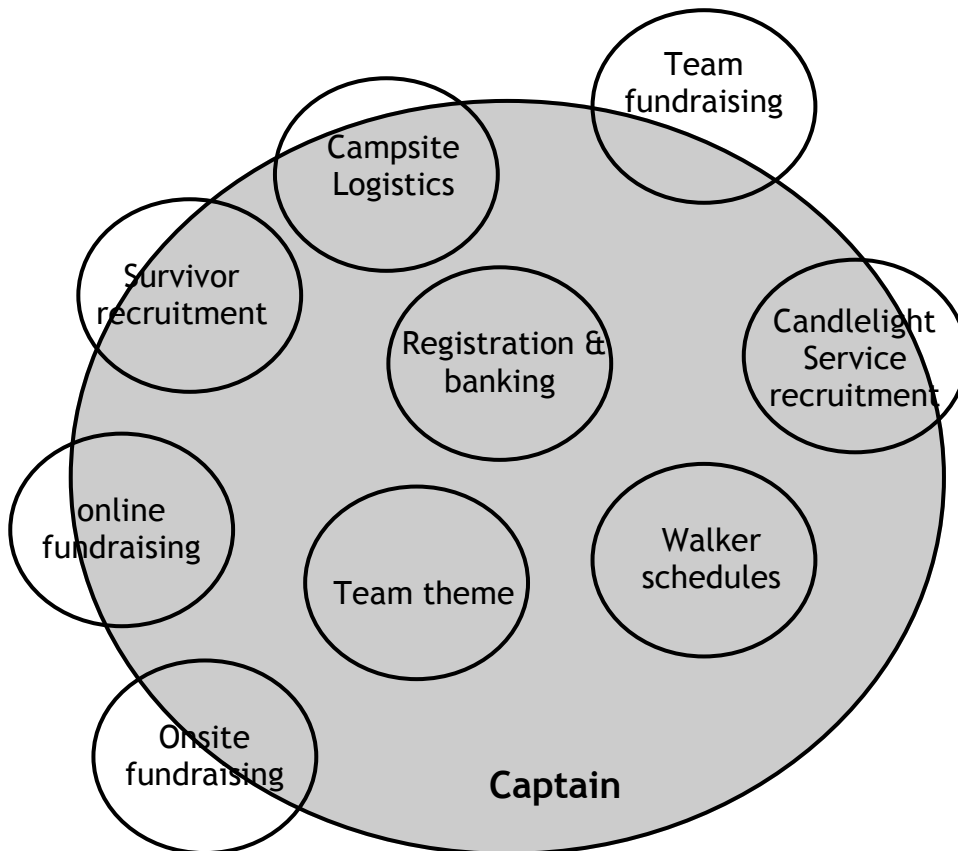
Cancer Society

Relay For Life



The key to a successful team and to avoiding the team captain becoming overloaded, is to delegate smaller, specific tasks to each team member.

Not so good team model



The model on the left shows the amount work that can be loaded onto the team captain. The ideal model overleaf shows an easy way to split tasks into 10 areas. Some of these tasks are bigger than others and could be shared by more than one person, and some members may take on more than one of the smaller roles. While some of these activities may be lead by one person they still require whole team involvement to be successful (i.e. team fundraising activities)

The team captain and co- captain should aim to be coordinators and become the link between the cancer society and the rest of the team. They attend the team captains meetings, receive and distribute resources and information and provide leadership and direction to the rest of the team. They would also chair any team meetings.

While a co-captain may not seem necessary it is a good idea to train someone new to take over the role in subsequent Relays, and to ensure there is a back up person if required at short notice.

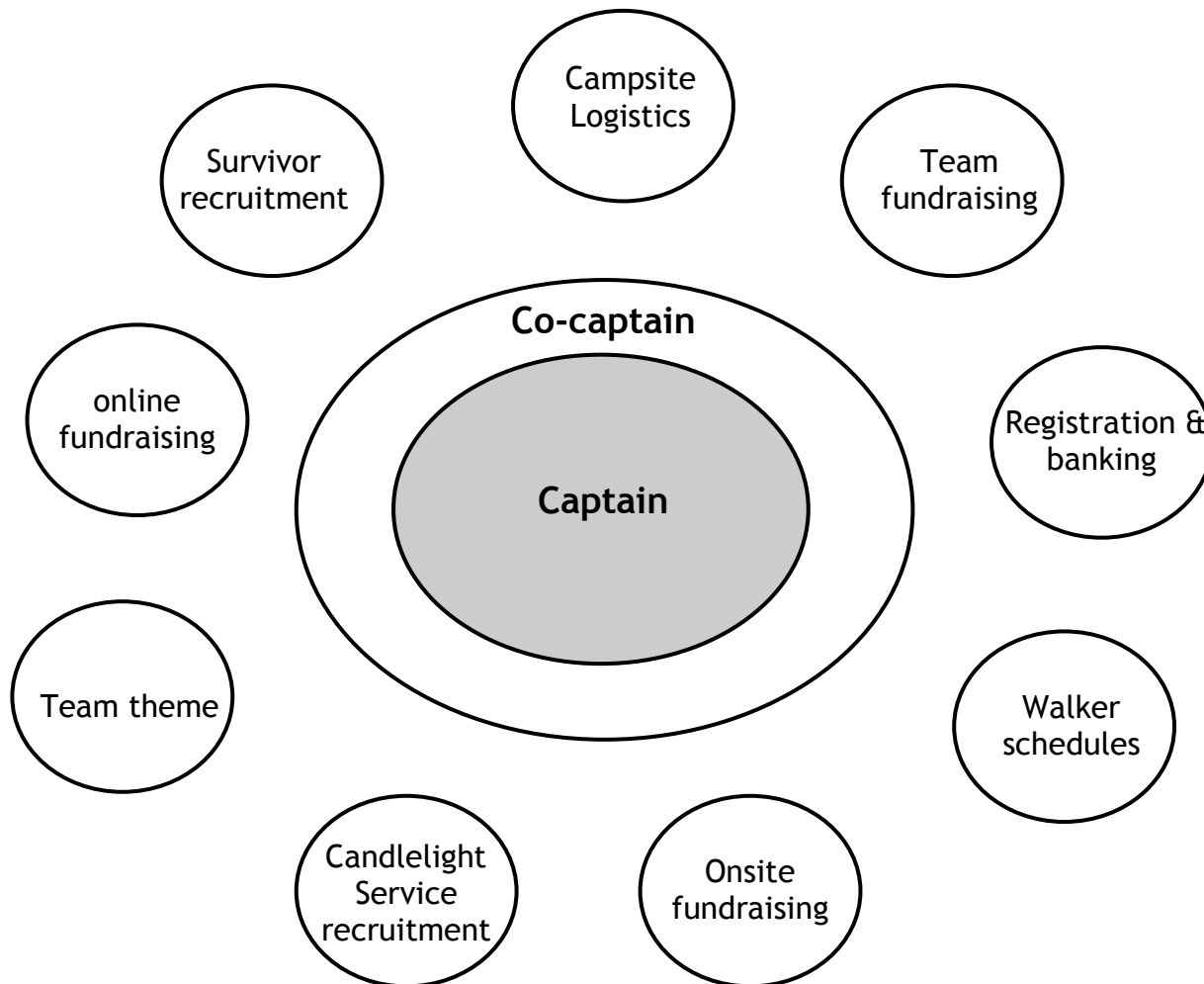
We want all participants to thoroughly enjoy their Relay experience and want to come back to the next event— Try to work smarter not harder and share the load!



Cancer Society

Relay For Life

Ideal team model



The key to a successful team and to avoiding the team captain becoming overloaded, is to delegate smaller, specific tasks to each team member.

The model on the left shows an ideal way to split tasks into 10 areas. Some of these tasks are bigger than others and could be shared by more than one person, and some members may take on more than one of the smaller roles. While some of these activities may be led by one person they still require whole team involvement to be successful (i.e. team fundraising activities)

The team captain and co-captain become coordinators and become the link between the cancer society and the rest of the team. They attend the team captains meetings, receive and distribute resources and information and provide leadership and direction to the rest of the team. They would also chair any team meetings.

While a co-captain may not seem necessary it is a good way to train someone new to take over the role in subsequent Relays, and to ensure there is a back up person if required at short notice.